

Watersport Pinnie style guide

The pinnies are 100% polyester fabric, dye-sublimated, then cut & sewn to our specifications at a USA based facility. They are the modern day team wear for professional, college, high school, and junior teams.

The guide has examples of popular layouts to get you started, but don't let that stop you from getting very creative, we can print anything! Want help? Our in-house graphic designer can help give your team a distinctive look.

STOUTGEAR



SAILING

Ordering Information:

Cost:

6-11 pcs. = \$34.80

12-23 pcs. = \$32.80

24+ pcs. = 30.80

\$50.00 one-time setup fee.

If personalized (team member name/ number) add \$5.00 per pinnie.

Minimum order: 6 pinnies

Production time: 3 weeks. the graphics are sublimated on to blank polyester fabric, then sent to the cut &L sew production facility for final construction. If needed more quickly, contact us.

Sizing: We have 3 sizes corresponding to PFD sizing:

Youth (less than 90lbs); Sm/Md (90 lbs - 150 lbs); Lg/XL (greater than 150 lbs)

Payment: Prepayment required until you establish credit.

Credit cards and checks accepted.

Use of Logo's: The purchaser must indemnify STOUTgear of any liability arising out of our related to any actual or alleged infringement of trademark, copyright, service mark, etc.

Shipping: Product will ship from Annapolis, Maryland. Shipping costs are additional to the cost goods.



(410) 268-1500

Lorie@ stoutgear.com

StoutgearSailing.com

3451 Cohasset Ave
Annapolis, MD
21403

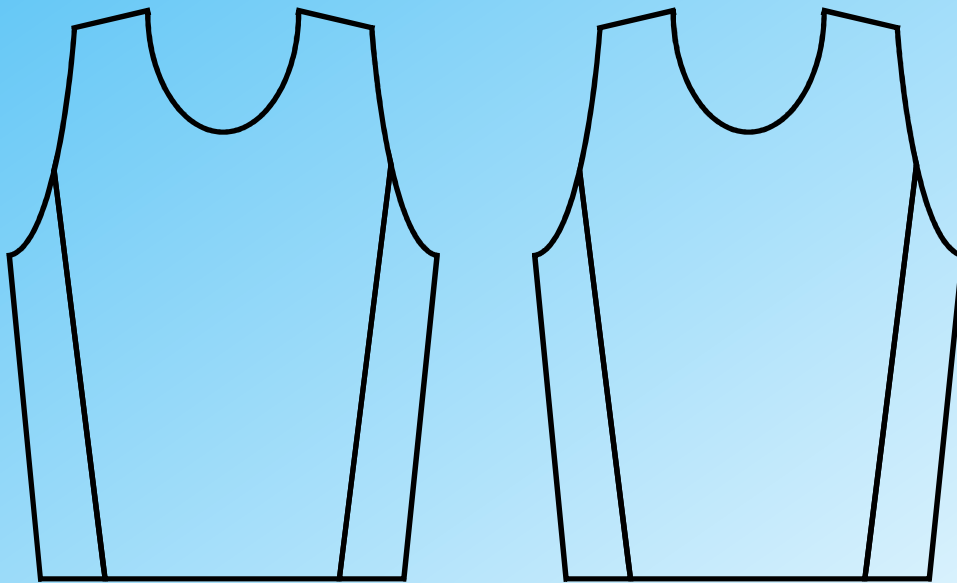
Style idea – Side Bar

As shown below the “Side Bar” design is more akin to racing stripes. A very sporty look. Front and back of pinnie provide ample area for graphics while the side bar displays secondary school colors down the side of the torso.

Special effects like the burgees in the side bar of the California Pinnie are a fun idea.



Template



FRONT

BACK

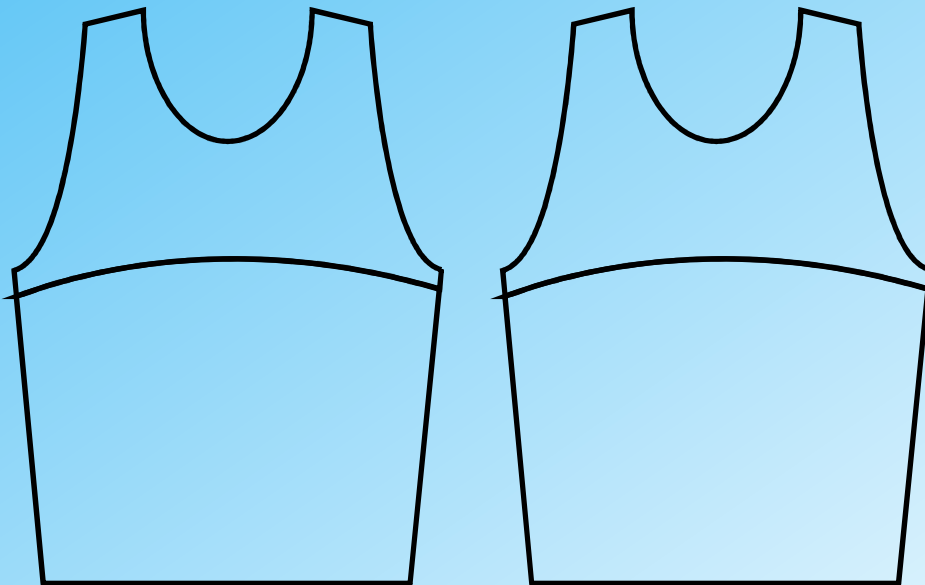
Style idea – Arched

Top color goes across the shoulder blades and the upper chest.
Bottom color continues from the shoulder blades
down in back and middle chest down in front.

Perfect for placing names above logos
and getting two school colors together.



Template



FRONT

BACK

Style idea – Accent

Bold body color accented with a second color on the edges.



Template



FRONT



BACK

Style idea – Custom

Give us a graphic or idea and we can make it happen.
Use textures, original artwork, fades, and anything other idea
you can imagine.



Tye Dye
Template

Custom Artwork



FRONT



BACK

Colors



Lemon - 102



Light
Blue - 277



Purple - 2613



Gold - 123



Carolina
Blue - 279



Silver - cool 2



Orange - 021



Process
Blue



Grey - 429



Warm Red



Royal
Blue - 280



charcoal -
cool 11



Red - 186



Navy
Blue - 289



Beige - 719



Burgundy - 202



Teal - 3282



Light
Brown - 470



Princess
Pink - 211



Kelly
Green - 347



Brown - 4695



Bright Pink -
Rhodamine



Dark
Green - 350



Black

We Speak PMS color match and we can match any color you shout out. Above is a list of colors that we refer to as the Crayola colors (basic for 90% of school color matches).